



PRESSURE GAUGES STAINLESS STEEL HEAVY VERSIONS



Case:
Stainless steel W 1.4301

Glass:
Safety glass

Movement:
Stainless steel W 1.4571

Accuracy:
+/- 1,6 % Ø60 gauge
+/- 1,0 % Ø100 gauge
+/- 1,0 % Ø160 gauge

Measuring system:
Bourdon-tube
Stainless steel W 1.4571

Max.process temperature:
+200°C

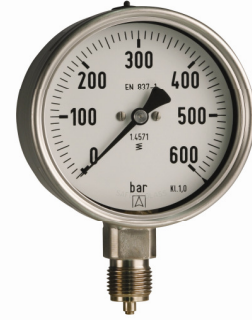
Code	Type	Diam.	Ranges	Connect	Materials
06302-BA	302	63	-1 - 0 bar	G1/4 Radial	SS / SS
06302-BH	302	63	0 - 1 bar	G1/4 Radial	SS / SS
06302-BJ	302	63	0 - 2,5 bar	G1/4 Radial	SS / SS
06302-BK	302	63	0 - 4 bar	G1/4 Radial	SS / SS
06302-BL	302	63	0 - 6 bar	G1/4 Radial	SS / SS
06302-BM	302	63	0 - 10 bar	G1/4 Radial	SS / SS
06302-BN	302	63	0 - 16 bar	G1/4 Radial	SS / SS
06302-BO	302	63	0 - 25 bar	G1/4 Radial	SS / SS
06302-BP	302	63	0 - 40 bar	G1/4 Radial	SS / SS
06302-BQ	302	63	0 - 60 bar	G1/4 Radial	SS / SS
06302-BR	302	63	0 - 100 bar	G1/4 Radial	SS / SS
06302-BS	302	63	0 - 160 bar	G1/4 Radial	SS / SS
06302-BT	302	63	0 - 250 bar	G1/4 Radial	SS / SS
06302-BV	302	63	0 - 400 bar	G1/4 Radial	SS / SS
06302-BX	302	63	0 - 600 bar	G1/4 Radial	SS / SS
06302-BY	302	63	0 - 1000 bar	G1/4 Radial	SS / SS
10402-BA	402	100	-1 - 0 bar	G1/2 Radial	SS / SS
10402-BB	402	100	-1 - 1,5 bar	G1/2 Radial	SS / SS
10402-BC	402	100	-1 - 3 bar	G1/2 Radial	SS / SS
10402-BD	402	100	-1 - 5 bar	G1/2 Radial	SS / SS
10402-BE	402	100	-1 - 9 bar	G1/2 Radial	SS / SS
10402-BF	402	100	-1 - 15 bar	G1/2 Radial	SS / SS
10402-BG	402	100	0 - 0,6 bar	G1/2 Radial	SS / SS
10402-BH	402	100	0 - 1 bar	G1/2 Radial	SS / SS
10402-BI	402	100	0 - 1,6 bar	G1/2 Radial	SS / SS
10402-BJ	402	100	0 - 2,5 bar	G1/2 Radial	SS / SS
10402-BK	402	100	0 - 4 bar	G1/2 Radial	SS / SS
10402-BL	402	100	0 - 6 bar	G1/2 Radial	SS / SS
10402-BM	402	100	0 - 10 bar	G1/2 Radial	SS / SS
10402-BN	402	100	0 - 16 bar	G1/2 Radial	SS / SS
10402-BO	402	100	0 - 25 bar	G1/2 Radial	SS / SS
10402-BP	402	100	0 - 40 bar	G1/2 Radial	SS / SS
10402-BQ	402	100	0 - 60 bar	G1/2 Radial	SS / SS
10402-BR	402	100	0 - 100 bar	G1/2 Radial	SS / SS
10402-BS	402	100	0 - 160 bar	G1/2 Radial	SS / SS
10402-BT	402	100	0 - 250 bar	G1/2 Radial	SS / SS
10402-BU	402	100	0 - 315 bar	G1/2 Radial	SS / SS
10402-BV	402	100	0 - 400 bar	G1/2 Radial	SS / SS
10402-BX	402	100	0 - 600 bar	G1/2 Radial	SS / SS

Lyth-Instrument Oy
Peltosaarekatu 8
FI-11130 Riihimäki
Finland , Europe

phone: + 358-19-760330
fax : + 358-19-722085
www.lyth.fi



PRESSURE GAUGES STAINLESS STEEL HEAVY VERSIONS



Case:
Stainless steel W 1.4301

Glass:
Safety glass

Movement:
Stainless steel W 1.4571

Accuracy:
+/- 1,6 % Ø60 gauge
+/- 1,0 % Ø100 gauge

Measuring system:
Bourdon-tube
Stainless steel W 1.4571

+/- 1,0 % Ø160 gauge

Max.process temperature:
+200°C

Code	Type	Diam.	Ranges	Connect	Materials
10412-BA	412	100	-1 - 0 bar	G1/2 Axial	SS / SS
10412-BB	412	100	-1 - 1,5 bar	G1/2 Axial	SS / SS
10412-BC	412	100	-1 - 3 bar	G1/2 Axial	SS / SS
10412-BD	412	100	-1 - 5 bar	G1/2 Axial	SS / SS
10412-BE	412	100	-1 - 9 bar	G1/2 Axial	SS / SS
10412-BF	412	100	-1 - 15 bar	G1/2 Axial	SS / SS
10412-BH	412	100	0 - 1 bar	G1/2 Axial	SS / SS
10412-BI	412	100	0 - 1,6 bar	G1/2 Axial	SS / SS
10412-BJ	412	100	0 - 2,5 bar	G1/2 Axial	SS / SS
10412-BK	412	100	0 - 4 bar	G1/2 Axial	SS / SS
10412-BL	412	100	0 - 6 bar	G1/2 Axial	SS / SS
10412-BM	412	100	0 - 10 bar	G1/2 Axial	SS / SS
10412-BN	412	100	0 - 16 bar	G1/2 Axial	SS / SS
10412-BO	412	100	0 - 25 bar	G1/2 Axial	SS / SS
10412-BP	412	100	0 - 40 bar	G1/2 Axial	SS / SS
10412-BQ	412	100	0 - 60 bar	G1/2 Axial	SS / SS
10412-BR	412	100	0 - 100 bar	G1/2 Axial	SS / SS
10412-BS	412	100	0 - 160 bar	G1/2 Axial	SS / SS
10412-BT	412	100	0 - 250 bar	G1/2 Axial	SS / SS
10412-BV	412	100	0 - 400 bar	G1/2 Axial	SS / SS
10412-BX	412	100	0 - 600 bar	G1/2 Axial	SS / SS
16402-BA	402	160	-1 - 0 bar	G1/2 Radial	SS / SS
16402-BC	402	160	-1 - 3 bar	G1/2 Radial	SS / SS
16402-BD	402	160	-1 - 5 bar	G1/2 Radial	SS / SS
16402-BE	402	160	-1 - 9 bar	G1/2 Radial	SS / SS
16402-BF	402	160	-1 - 15 bar	G1/2 Radial	SS / SS
16402-BH	402	160	0 - 1 bar	G1/2 Radial	SS / SS
16402-BK	402	160	0 - 4 bar	G1/2 Radial	SS / SS
16402-BL	402	160	0 - 6 bar	G1/2 Radial	SS / SS
16402-BM	402	160	0 - 10 bar	G1/2 Radial	SS / SS
16402-BN	402	160	0 - 16 bar	G1/2 Radial	SS / SS
16402-BO	402	160	0 - 25 bar	G1/2 Radial	SS / SS
16402-BT	402	160	0 - 250 bar	G1/2 Radial	SS / SS

Lyth-Instrument Oy
Peltosaarekatu 8
FI-11130 Riihimäki
Finland , Europe

phone: + 358-19-760330
fax : + 358-19-722085
www.lyth.fi