



LE SERIES HYGIENIC REMOTE SEALS FOR FOOD INDUSTRY

SMS , DIN 11851 , TRI-CLAMP , IDF , APV-RJT



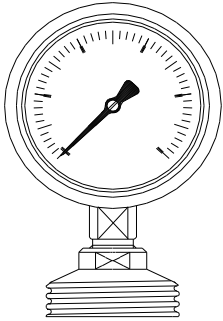
The body and wetted parts are AISI 316.
 The diaphragm is AISI 316L.
 The diaphragm can coated with Teflon.
 Filling fluid is Neobee oil (fluid is accepted to food industry.)

NS	H	G1	G2	D	
SMS MALE THREAD					
25		G 1/2"			
38	33	G 1/2"	Rd60x1/6		
51	33	G 1/2"	Rd70x1/6		
SMS FEMALE THREAD					
25	40	G 1/2"	Rd40x1/6	51	
38	28	G 1/2"	Rd60x1/6	74	
51	28	G 1/2"	Rd70x1/6	84	
DIN 11851					
40	28	G 1/2"	Rd65x1/6	78	
50	28	G 1/2"	Rd78x1/6	92	
TRI-CLAMP					
38	35	G 1/2"		50.5	
51	35	G 1/2"		64	

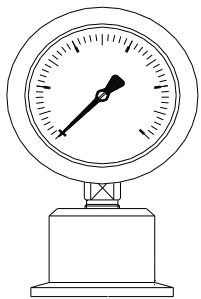
Lyth-Instrument Oy phone: + 358-19-760330
 Peltosaarenkatu 8 fax : + 358-19-722085
 FI-11130 Riihimäki www.lyth.fi
 Finland , Europe



LE SERIES



SMS 51 mm (2") remote seal (male) connected to pressure gauge



2" TRI-CLAMP remote seal connected to pressure gauge

LE.	Remote seal for food industry		
	Standard connection for food industry		
1	DIN 11851		
2	SMS		
3	IDF		
4	APV-RTJ		
5	Tri-Clamp		
	Process connection		
0	Without process connection		
4	Welding connection with nut		
5	Welding connection TRI-CLAMP		
8	Welding connection with male thread		
	Process connection of the diaphragm seal		
4	Diaphragm seal for nut		
8	Diaphragm seal with male thread		
	Nominal pipe diameter		
-	2=25 3=38/40 5=50/51 6=63		
	Measuring connection		
R	BSP 2=1/2" 3=3/8" 4=1/4" female 7=1/2" 8=3/8" 9=1/4" male		
N	NPT 2=1/2" 4=1/4" female 7=1/2" 9=1/4" male		
H	Connected to measuring instrument with capillary		
XM	Connected to transmitter with side connection		
	Capillary		
-	Without capillary or cooling element.		
S2H	Cap. 3,00x1,00 mm / 1, 2, 3, 4, 5, 6, 7, 8, 9, 10 m		
S1H	Cap. 3,18x1,76mm/ 1, 2, 3, 4, 5, 6, 7, 8, 9, 10 m		
JK	Cooling element		
	Body	Diaphragm	Wetted parts
000	AISI 316	AISI 316L	AISI 316
005	AISI 316	AISI 316L	PTFE
	86	Neobee	

LE 2 0 4 5 R2 - 000 86

- For food industry
- SMS norm
- No process connection
- Remote seal with female thread
- DN50
- Measuring element connection G1/2"female
- No cooling neck or capillary
- Material Aisi 316
- Filling fluid Neobee